

Voice Sounders & Evacuation Solutions



Product Overview

- Voice Sounders
- Sounders, Bells and Visual Alarm Devices
- Linear Heat Detection
- Water Leakage Detection
- Manual Call Points
- Door Holders
- Anti-Vandal Products

Welcome To Our Evacuation Overview

4 Fire-Cryer® Voice Sounders

Fire-Cryer® Plus
Fire-Cryer® Solo
Fire-Cryer® Extinguishant PCB
Voice Message Controller

5 Sounders, Bells & Visual Alarm Devices

Banshee Excel Range
Bells
VAD23 - Ceiling Mounted Beacon
EN54 Approved Loop Sounder System
Alarm Indicator Buzzer Unit
VX Series Beacons
VSP-101 Security Sounder
Ani-Mate® Animal Friendly Sounder

8 ICAS Micro Fire Alarm System

9 Water Leak Detection

Hydrosense Conventional - HS
Hydrosense Addressable - ID

10 Signaline Linear Heat Detection

Signaline HD
Signaline FT

11 Call Points & Anti-Vandal Products

SyCall Reset-Glow Manual Call Point Range
Smart+Guard Protective Call Point Covers
Smart+Cage Protective Equipment
Smart+Shield Emergency Exit Door Protection

13 Hazardous Area

E2S BEx Combination Signal
E2S BExCP3A / BExCP3B Call Points
E2S GNExCP6A / GNExCP6B
E2S GNEx Visual Signals
E2S D1x Combination Signals
IS FlashDome
IS28 Mk.6
IS Mini-Series - Intrinsically Safe Sounders and Beacons

15 System Ancillaries

Door Holders
Energys Batteries
Power Supplies
Mains Voltage Safety Isolator
GSM Dialler
Remote Indicator



About Vimpex

Vimpex are acknowledged experts in voice sander and audible/visual evacuation technology.

The Fire-Cryer® Voice Sounder is testimony to Vimpex's enthusiasm for innovation and a fresh approach to evacuation.

From our highly efficient distribution warehouse, Vimpex can supply a complete range of voice sounders, audible and visual alarms and accessories. Most products can be brand labelled if required.

Loyalty to third party approval and testing has meant massive investment, both by Vimpex and its suppliers, to gain third party approval on all fire products.

All technical details on the products featured in this document are available as electronic datasheets at www.vimpex.co.uk or by request as hard copies.

Our management systems are certified to ISO9001.

Voice Sounders

Fire-Cryer® Plus voice enhanced sounders have been developed to counteract the ever-increasing problem of audible alarms being ignored. It eliminates any potential confusion by combining a normal sounder signal with a clear and unambiguous voice message.

Fire-Cryer® Plus products require no special wiring and can be retrofitted to existing installations. They are fully synchronised and have an exceptionally low current consumption allowing simple replacement of existing sounders and bells. Up to 7 different messages can be selected from a library of hundreds - with foreign language and bespoke messages also available.

Fire-Cryer® Plus



- Sound output - 100 dB(A)
- Optional integral strobe
- Low current - average 20 mA
- No special wiring, easily retro-fitted
- Fully synchronised
- Deep base version available to IP66



Mini Fire-Cryer® Plus



- Sound output - 90 dB(A)
- Ultra-slim base sounder to fit industry-standard detectors
- Omni-directional sound output
- Choice of colour to match detectors
- Installer-friendly connections
- Suitable for ceiling or wall mounting
- Optional front plate for stand-alone use



Fire-Cryer® Extinguishant PCB

Fire-Cryer® Plus can be seamlessly integrated into any gas suppression system using this switching PCB. The board can be interfaced with extinguishant control panels to give verbal warnings of each alarm stage including gas release; thereby increasing safety whilst saving on wiring costs.



Voice Message Controller

In order to manually control the 7 messages on a Fire-Cryer® Plus system, the Voice Message Controller can be used. The VMC is a fully wired switching interface with clear operation instructions printed on the fascia.



- Ideal for retrofit installations
- Eases integration of the Fire-Cryer® Plus at new sites
- Can be linked for synchronisation over numerous zones
- Ease of use benefits the customer

Fire-Cryer® Solo

The single fixed message Fire-Cryer® Solo provides a cost-effective, entry-level voice sounder for less demanding voice evacuation applications.



With the same audible performance as the Fire-Cryer® Plus, the Solo is programmed with a single message ("Fire Emergency, Please remain calm and evacuate the building immediately").



Maxi Fire-Cryer® Plus

High-powered voice sounders designed for environments such as industrial applications and large open spaces like warehouses and factories.



- Sound output - 107 to 116 dB(A)
- Rugged and weatherproof enclosure (IP67)
- Low current - average 100 mA
- Ideally suited for open areas and noisy environments



Sounders, Bells & Visual Alarm Devices

Banshee Excel™

Banshee Excel™ range of sounders, beacons, sounder beacons and accessories represents the most modern and acoustically advanced range of conventional electronic sounders, combined units and dedicated beacons available on the market today.



All sounders and sounder beacons come with 32 user-selectable tones incorporating low frequencies, high frequencies, European, American and Australian norms and all industry standard frequency patterns. Tested and approved to EN 54 Part 3, the Banshee Excel™ range boasts leading acoustics, aesthetically pleasing designs and low power consumption.

Enhancing the Excel range is VimpeX's Identifire Base Sounder, the thinnest platform sounder on the market and is renowned for its reliable 360° sound dispersal. The Banshee Excel Lite™ sounder beacon units offer all the functionality of the Banshee Excel™ sounders, together with either Xenon or LED beacon technology and several different coloured lenses to enhance the evacuation signal. The Banshee Excel™ FlashDome stand-alone beacon features ultra-efficient LEDs.

Banshee Excel™ FlashDome



The Banshee Excel FlashDome features ultra-efficient LEDs.



Fire Alarm Bells

The fire alarm bell is the traditional way to signal fire. Due to the broad sound frequency content of a natural ringing tone, the bell is still arguably the most effective tone-only fire alarm device. This LPCB-approved range of fire bells boasts high sound output and very low power consumption.



- Very low current consumption - 11mA
- Excellent sonorous tone - up to 100 dB(A)
- Dedicated weatherproof versions
- 24 V bells certified by LPCB to EN54-3:2001

StroBell Combination Unit

The StroBell combined bell and beacon is an innovative way to combine the benefits of a traditional bell with EN 54 Part 23 LED technology.



- Quick to install bell/beacon combination
- Terminals can be isolated for use as a two stage alarm
- Bright Xenon LED ideal for Equality Act compliant systems (EN 54-3 and EN 54-23 pending)

Sounders, Bells & Visual Alarm Devices

VAD23 - Ceiling Mounted Beacon

A high intensity ceiling-mounted Visual Alarm Device; the unit is ideal for providing a primary warning signal in areas where sounders alone will not be sufficient. The VAD23 - Ceiling Mounted Beacon is third party approved to EN54-23, and certified to the rating of C-3-7.5.



EN54 Approved Loop Sounder System

Installing a VimpeX Loop Sounder System with short-circuit isolation provides complete sounder circuit integrity. By wiring the sounder circuit in a loop instead of a traditional radial, all sounders will remain operational in the event of a short circuit or open circuit fault.

The system and its components have been tested by leading European notified bodies and have been shown to comply with EN 54-3, EN 54-17 and EN 54-18. The system is fully compliant with BS 5839-1 using a single sounder loop. Use of the VimpeX Loop Sounder System will greatly increase the reliability of the sounder circuits and in many cases result in a saving in the amount of cable used.

Each loop can accommodate up to 45 sounders. Suitable for use on both conventional and addressable fire alarm systems, the system provides much greater protection against faults than the 'dual radial' circuit arrangements commonly used.

Features

- Enhanced sounder circuit integrity and reliability
- Compliant with EN 54 and BS 5839-1
- Certified by LPCB to EN 54 Part 17 and 18
- Potential cable savings
- 45 sounders per loop
- System includes Banshee Excel™
- Can also be used with other sounder and strobe units
- Multiple interfaces can be installed dependant on size of system
- Isolator fits into standard base or deep base
- Signalling device is monitored
- Incorporates double switch short circuit isolator in sounder base and interface modules
- Interface module has fail safe operation



Alarm Indicator Buzzer Unit



The VimpeX BZ1L is an indicator with sounder unit. It is designed to be connected to a conventional sounder circuit or strobe circuit from a control panel.

VX Series



The VX Series of Xenon Strobes offers a wide range of voltages and light outputs to meet a diverse range of internal and external visual signalling requirements. All VX series are available in multiple different coloured lenses and are IP65 or IP67 rated.

VSP-101 Security Sounder



A high quality and reliable sounder for security applications.

- 12 V dc operation
- High output but low current consumption
- Double anti-tamper switch
- Distinct sound

Sounders, Bells & Visual Alarm Devices

Ani-Mate® Animal Friendly Sounders

Ani-Mate® is an animal friendly sounder that uses a specifically developed low frequency tone (sub 400 Hz), which is designed to minimise discomfort to animals. The Ani-Mate is designed to be used as a 'silent' fire alarm.

The 'silent' fire alarm was developed because of the need for an effective alarm signal for use in animal facilities which does not cause distress to animals. Small mammals in particular can be distressed by the frequency of tones emitted by standard electronic sounders and bells. The Ani-Mate is easily interfaced with the existing fire alarm system. Whilst the Ani-Mate can be used as a simple replacement for traditional sounders and bells, it can also be used as a voice sounder (although not compatible with the Fire-Cryer range of voice sounders).

- Sub 400 Hz frequency designed to minimise distress to animals
- 24 V dc operation means easy interface to existing systems
- Attractive, low profile designs
- Wide volume control - 89 to 103 dB(A)
- Can be programmed with voice messages



Ani Mate®

ICAS Micro Fire Alarm System

ICAS Micro Fire Alarm System

The ICAS Micro Fire Alarm System is an aesthetically pleasing and compact solution designed for use in dwellings, flats, guest houses, HMOs and small commercial buildings.

The ICAS Fire Alarm System is designed to comply with both BS 5839-1 and BS5839-6 (Grade A System) and is capable of providing 72 hour standby as demanded by BS 5839-6.

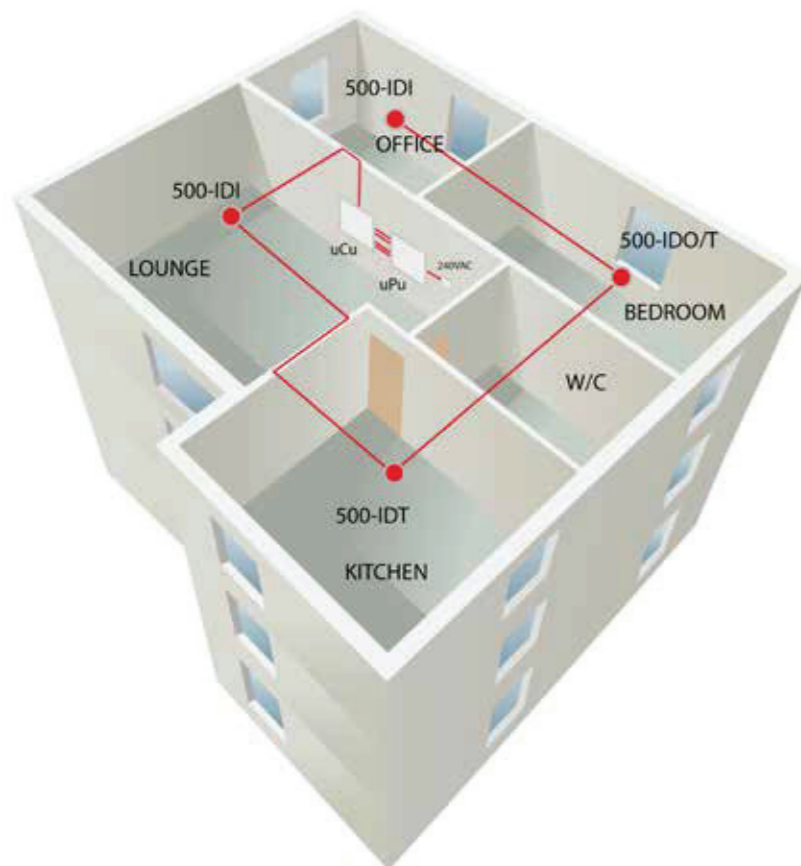
The system and components are approved to the relevant parts of EN54-2, EN54-4, EN54-5 Class A1 and EN54-7.

The ICAS system comprises of:

- Compact micro Power Supply with optional 72 hour backup
- Compact micro Operating Panel designed to fit into a single gang box
- A wide range of Smoke Detectors, Heat Detectors, and Smoke/Heat Alarms

The system is easy to install into a single gang flush or surface mount box, with up to 13 detectors and 8 optional integrated sounders.

ICAS Micro can be integrated with the ICAS Fire Alarm Control Panel, addressable fire alarm systems and KNX systems.



Typical high rise dwelling, using the Micro Operating Panel and Micro PSU in multiple dwellings with common and local alarms.

μPU installed in main distribution panel or surface box



μCU Operating Panel installed in a suitable position



Detector with integrated sounder type 500-IDx



Maximum 13 detectors with up to 8 integrated sounders



Water Leak Detection

Hydrosense

Introducing new Hydrosense by VimpeX: a totally unique Water Leak Detection System with both Addressable and Conventional solutions. Hydrosense is a highly robust and infinitely reliable water leak detection system, providing the same integrity as life safety systems.



Hydrosense Conventional - HS

- Fully monitored circuits
- Robust junction and connection boxes
- Simple to install and maintain
- Linear detection - Hydrowire offers enhanced durability and flexibility
- Point detection - Probes include enhanced aesthetics and a robust detection method
- Common Fault and Alarm relay contacts available
- 'Plug and Play' installation - connection and termination even simpler via unique plug and socket arrangement
- GSM Dialler option for SMS alerts

Hydrosense Addressable - ID

- Single and dual loop control panels
- Supports up to 254 point detection probes, and 25,400 m of Hydrowire
- Customisable LED display, allowing each device to be given a unique address
- Reduced installation time and cable use
- Relays to control water shut off valves and other plant and equipment - 8-way relay board also available
- RS485 data bus capable of supporting up to 32 expander cards
- 230V relay unit available
- Sophisticated protocol allows for complex system design

GSM Dialler

The ANC0023 is a quad-band GSM relay board and auto-dialler. The unit can be used as a general purpose call/SMS activated relay. This allows for swift alerts at the point of a leak detection.



The Hydrowire and probes should be located in areas that pose the greatest risks.

Signaline Linear Heat Detection

Linear heat detection provides early detection of fire conditions or overheating of equipment, plant or the surrounding area. Signaline cable senses heat anywhere along its length and is designed to be used in commercial and industrial applications.

Heat sensing cables can be used with, or in place of conventional heat detectors. They can also be used where conventional heat detection may be cost-prohibitive or difficult to install and maintain.

- Highly cost effective form of detection
- Easily installed
- Maintenance free
- Can be used in hazardous areas and dusty or harsh environments down to -40°C

Two types of Signaline linear heat detection cable are available: Fixed Temperature - **Signaline FT** and Analogue - **Signaline HD**.



Applications

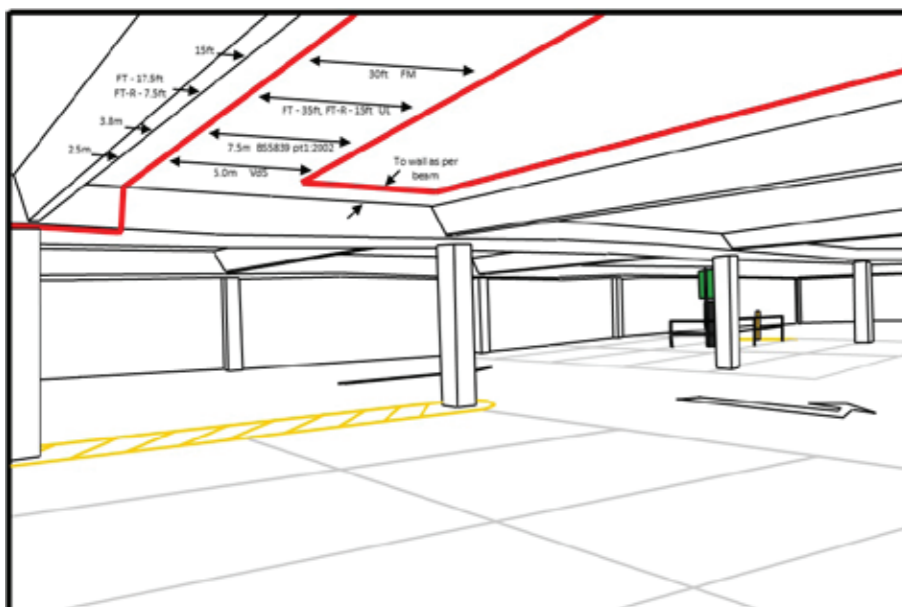
- Cable Trays
- Plant Rooms
- Vehicles
- Multi Storey Car Parks
- Industrial Kitchens
- Warehouses
- Waste Recycling Facilities
- Process Plants & Power Stations
- Hazardous Areas
- Shipping & Marine



Signaline HD



Signaline FT



It is important to detect a fire in a car park full of valuable vehicles. Catching it early can prevent thousands of pounds worth of damage.

Call Points & Anti-Vandal Products

SyCall Reset-Glow Manual Call Point Range

The Vimpex resettable call point mimics the look and feel of glass. By using an ingenious patented mechanism, it enables call points to be properly tested every time with minimum hassle.



- An appearance of glass maintains operator deterrence
- Positive activation mimics the feel of breaking glass
- Visible warning flag confirms activation - a real test every time!
- Optional LED back light illuminates break glass area when call point is activated
- Simple key to reset operating element - no broken glass
- No glass elements to break, lose or incorrectly fit during installation
- Several switching arrangements, including for 2-wire systems
- Low profile, heavy-duty terminations
- Weatherproof version available
- Available in five colours



Smart+Guard Protective Call Point Covers

Smart+ products are designed to protect essential fire and security equipment and can reduce malicious or accidental false alarms.



The Smart+Guard is a tough polycarbonate hinged protective cover that can easily be installed over call points and emergency switches to provide protection from vandalism, accidental damage or misuse.

- Designed for ease of installation - can be fitted in minutes
- Optional battery powered 90dB alarm, increasing security and protection
- Break seal also available to increase visible deterrent against misuse
- Available in 5 colours: red, green, yellow, blue and white



The red variant is commonly installed over fire alarm break glass call points to protect the break glass from deliberate misuse or accidental damage. This reduces the incidents of false fire alarms.



Smart+Guard Enviro



The Smart+Guard Enviro has been designed and engineered to provide protection for devices used in hostile environments.

Applications include offshore, the food and beverage industry, swimming pools and leisure centres, and underground installations.

Smart+Cage

Smart+Cage protects essential Fire, Safety and Security equipment from theft, vandalism or accidental damage.

Constructed from PVC coated 4mm steel bar, these tough resilient waterproof cages provide security for a wide range of devices.

Multiple size options are available.



Certain Smart+Cages are certified for UK prison use.

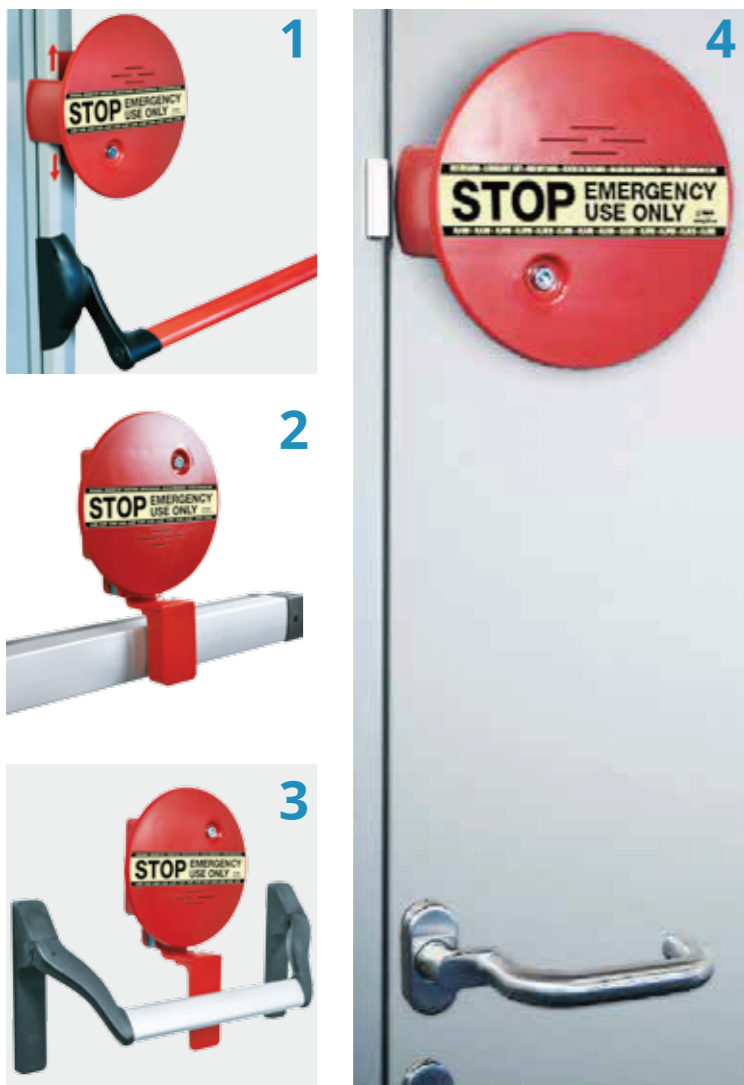
Call Points & Anti-Vandal Products

Smart+Shield

Smart+Shield products offer a simple and cost-effective way to discourage the misuse of an emergency exit door, or even windows. Adopting the universally recognised word "STOP" on a bright red background, the Smart+Shield is a visually effective deterrent. If activated, a loud noticeable security alarm of 95dBs signals that the exit door has been opened.

Smart+Shield has been designed specifically to prevent unnecessary and unauthorised use of emergency exit doors. Mains or battery powered, in an emergency situation it will not prevent or hinder an evacuation in any way. As soon as the alarm is triggered, it can only be reset using the SMART+SHIELD key switch. It is completely self-contained, easily installed and is ready to activate on your emergency exit doors in seconds.

You can also adjust the settings to ensure it meets your specific needs. These can include a 30 or 180-second automatic alarm switch off, and volume adjustment to 75 decibels. The Smart+Shield can also be used as a delayed alarm to ensure emergency exit routes do not stay open and are suitable for use with central alarm systems.



Four different solutions,
to secure emergency
exits in seconds

Hazardous Area

E2S BEx Combination Signals

Zones 1, 2, 21, 22

Devices offering a dual signal from one installation point enabling the most cost-effective way to produce a warning signal. Xenon or L.E.D. beacons can be combined with an alarm sounder.



E2S BExCP3A / BExCP3B Callpoints

Zones 1, 2, 21, 22

ExCP3A and BExCP3B call points are approved for Zone 1, 2, 21 and 22 use. Available with and without monitoring resistors all versions are certified to ATEX and IECEx standards.



E2S GNEExCP6A / GNEExCP6B

Zones 1, 2, 21, 22

GNEExCP6A and GNEExCP6B call points are available as break glass, push button or tool reset versions. They are approved for Zone 1, 2, 21 and 22 use.



E2S GNEEx Visual Signals

Zones 1, 2, 21, 22

GNEEx explosion proof Xenon strobe beacons are IECEx & ATEX approved. The robust IP66 corrosion proof GRP enclosure and extended temperature range ensures the GNEExB1 and GNEExB2 strobes are suitable for all Zone 1, 2, 21 & 22 use. GNEExB2 beacon range produces up to 902cd effective candela - a very high output Xenon strobe flash as required for efficient signalling over greater distances and in high ambient light. Available in 10, 15 and 21 Joule variants, the GNEExB1 is available as a compact 5 Joule Xenon. The GRP enclosure features a threaded flame path, multiple cable entries and a large termination area - all of which significantly reduce installation time. Complimenting the GNEEx range is the GNEExJ2 Ex d junction box. Suitable for any use the box features multiple cable entries and terminal configurations.



E2S D1x Combination Signals

Class I/II Div 1, Zone 1, Zone 20.

D1x combined signals - audible and visual warning from one device. The Xenon strobe beacons are combined with alarm horn sounders either employing a traditional flare horn design, or the compact radial horn design. Strobe options include 5 or 10 Joules. Available in seven colours with a UV stable PC, field replaceable, filter. Flared version alarm horn sounders are available in sound pressure levels of up to 117 and 125dB(A). D1xC1X05 variants with 24Vdc operating voltage are also approved for audible public mode and visual private mode fire alarm use. A threaded flame path enables quick installation and simplifies maintenance inspection whilst the innovative internal arrangement maximises wiring space. Ratchet adjustable mounting brackets allow devices to be positioned for maximum effectiveness.



Hazardous Area

IS FlashDome

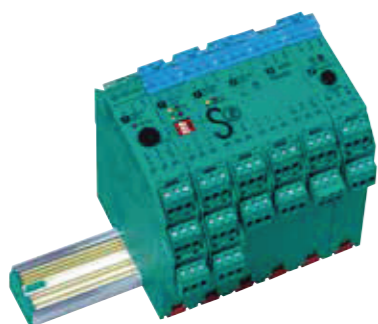
The IS FlashDome is an intrinsically safe beacon for use in hazardous areas. Certified to ATEX and IEC Ex, the IS FlashDome is designed for use in Zones 0, 1 & 2.

In order to be intrinsically safe, the IS FlashDome must be powered via an approved 28 V 300 Ω zener barrier or galvanic isolator. Suitable barriers and isolators are available from Vimpex - see below.



Barriers & Isolators

DIN rail mounted galvanic isolators and zener barriers for use with both the IS28 Mk.6 sounder and the IS FlashDome beacon are available from Vimpex.



IS28 Mk.6

Featuring 32 high and low frequency tones to suit a wide range of applications.

ATEX and IECEx approved for use in Zones 0 and 20 (Gas and Dust) and is suitable for use in zones 0, 1, 2, 20, 21 and 22.

The product should only be connected to the fire alarm system via an approved galvanic isolator or zener barrier. These devices are available from Vimpex along with a suitable enclosure



IS Mini-Series - Intrinsically Safe Sounders and Beacons

The IS-Mini Series consists of a range of compact intrinsically safe sounders, LED beacons and combined sounder/beacons.

They are suitable for all IS signalling applications including fire, security and process control.



System Ancillaries

Door Holders

Wireless Acoustic Door Holder



This wireless battery-powered magnetic Door Holder is triggered acoustically when the fire alarm sounders are activated. No external wiring is required with battery life in excess of 12 months with 2 standard 'C' cells.

Wired Door Holders



The Vimpex range of door holders offers the installer the broadest choice of mounting styles, holding power and installation accessories.

Mounted onto a fixed surface, these door holders ensure retention of the fire door by means of a smart metallic keeper plate. Interfaced with the fire alarm system, the door holders are de-energised as soon as the fire is detected, thus releasing the door without the potentially harmful delay suffered by other types of devices.

An extensive range of door holders available in both metal and plastic enclosures.

Energys Batteries

The Genesis NP battery range leads the way in battery quality and reliability. Developed by world leading manufacturer Energys, the Genesis NP series is the culmination of more than 100 years of battery manufacturing experience.

Sizes available range from 1.2Ah to 38Ah, meaning that we can provide a battery for almost any Fire, Security or Industrial application.

A high energy density and leak proof construction guarantees excellent performance in either float or cyclic applications - thus making Genesis the most reliable and versatile maintenance free rechargeable sealed lead acid battery on the market.

Features

- Guaranteed leak-proof operation in any position except inverted
- Expected life span of 3 to 5 years in float service applications
- More than 1,000 discharge/recharge cycles depending on the average depth of discharge
- Recovery capabilities even after deep discharges
- Can be operated in a broad range of ambient temperatures



Power Supplies

VPSU Series - General Purpose Power Supplies

The Vimpex range of low cost general purpose boxed PSUs are suitable for use with our wide range of BS EN1155 approved Door Holders and other 24 V dc devices. Three boxed 24 V dc general purpose power supplies are available: 1 A, 2 A and 3 A.



Identifire Series - EN-54-4 Power Supply/Charger

These high-specification PSUs provide full monitoring of mains failure, battery disconnection and total power failure.

Available as boxed or chassis mounted, the enclosed units are fitted in high quality, fully welded boxes with a key lock and a generous battery space and are available in flush or surface enclosures .

A number of the boxed units are



Engineer's Tool

This handy tool allows the installer to monitor the performance of the power supply, system currents and voltages, the condition of batteries and a log of PSU events and faults. It can also be used to calibrate and test power supplies.



System Ancillaries

Mains Voltage Safety Isolator



This product provides a secure method for safely isolating the mains voltage supply to fire systems in accordance with BS 5839: Part 1 (2002).

- Both the live and neutral supplies are isolated
- Integral fuse, which cannot be removed without taking the cover off
- The supply can only be isolated by an **authorised person**, by means of a keylock switch.

Remote Indicator



Our square remote indicator is fitted with a wide angle LED and is suitable for operation with conventional and most addressable systems.

GSM Dialler

The ANC0023 is a squad quad-band GSM relay board and auto-dialler. It offers Open-on-Call access control with Text Alert and Auto-Dial for GSM850MHz, GSM900MHz, DCS1800MHz and PCS1900MHz. The unit has been primarily designed for security applications although can be used as a general purpose call/SMS activated relay.



Ideal for use with Hydrosense water leak detection systems.

Singapore

Northstar @ AMK,
7030 Ang Mo Kio Avenue 5
#09-95
Singapore 569880

Ph: + 65 6757 7045
Email: sales@fast.expert

Indonesia

Gd. Nariba Dua
Floor.2 No.206
Jl.TB.Simatupang
No.49 Jakarta Timur 13760

Ph: +62 21877 82069
Email: sales@fast.expert



Assessed to ISO 9001
Cert/LPCB ref. 456



Fire Industry Association

DS/PROD/ISS-24

VIMPEX

Shaping Alarm Technology